

# Dressing Application Guide

## Invia® Foam Dressing Kit with FitPad: Bridging the FitPad

Two wounds of similar etiology may be bridged utilizing one dressing kit



**1. Thoroughly clean and debride the wound.**  
Apply skin prep to protect the peri-wound skin.



**2. Cut the foam** to fit the size and shape of the wound. Do not cut directly over the wound. Rub the edges of the foam to remove any loose particles.



**3. Place the foam** into the wound cavity. Do not tightly pack or force foam into areas of the wound. Do not allow the foam to overlap onto intact skin.



**4. Select an area to relocate the FitPad** (non-weight bearing area). **Apply transparent film** over any intact skin between the wound and the relocation site.



**5. Partially peel back** one side of layer 1, and place the adhesive side down. Now remove the transparent backing labeled 2. Finally remove the perforated silver colored tab on the side.



**6. Cut a foam "bridge", 3 cm wide,** that will be long enough to connect the wound with the relocation site (maximum **40 cm long**). Ensure the "bridge" is large enough to accommodate the FitPad at the relocation site.



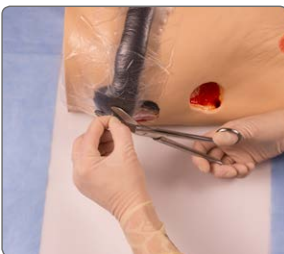
**7. Apply the "bridge"** on the transparent film between wound and relocation site. Ensure it has good contact with the foam in the wound and has no contact with unprotected skin.



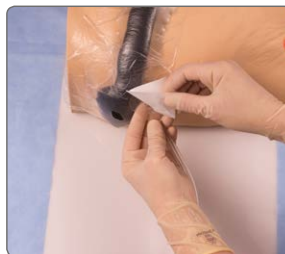
**8. Apply transparent film to cover all of the foam:** wound and the "bridge" foam. Follow the film application instructions described under step 5.



**9. Multiple pieces of film** can be used. The film should extend 3–5 cm beyond the margin of the foam dressing to facilitate an adequate seal.




**10. Select a central area to place the FitPad on the relocation site.** Pinch the film lifting slightly and cut a small hole (approx. 1 cm).





**11. Peel off the backing** of the FitPad to expose the adhesive. **Place the FitPad** centered over the previously cut hole. Press firmly for adherence.



**12. Attach the dressing tubing** to the pump tubing by pushing the **Quick-connector** together until you hear a click.

 **The Invia Foam Dressing Kit with FitPad is intended to be used in conjunction with the Invia Motion and Invia Liberty Negative Pressure Wound Therapy Systems (NPWT).**

 **Invia NPWT instructions advise 24 hour therapy without interruption. If therapy is discontinued for more than 2 hours, the dressing should be replaced and therapy restarted by a healthcare professional.**

 **This Quick Card does not replace the instructions for use REF 200.8923.**

# Dressing Application Guide

## Invia® Foam Dressing Kit with FitPad: Bridging two wounds



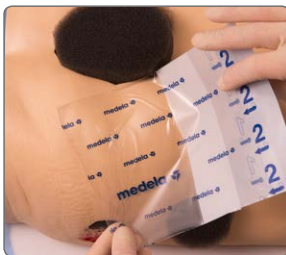
**1. Thoroughly clean and debride the wounds.**  
Apply skin prep to protect the peri-wound skin.



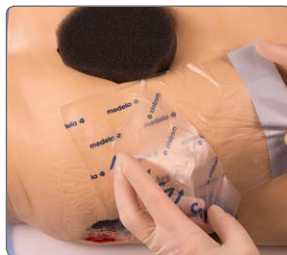
**2. Cut the foam** to fit the size and shape of the two wounds. Do not cut directly over the two wounds. Rub the edges of the foam to remove any loose particles.



**3. Place the foam** in each wound cavity. Do not tightly pack or force foam into areas of the wounds. Do not allow foam to overlap onto intact skin.



**4. Apply transparent film over any intact skin between the two wounds:** this is where your "bridge" will be placed.



**5. Partially peel back** one side of layer 1, and place the adhesive side down. Now remove the transparent backing labeled 2. Finally remove the perforated silver colored tab on the side.



**6. Cut a foam "bridge", 3 cm wide,** that will be long enough to connect the two wounds and touch the foam in both wounds (maximum 40 cm long).



**7. Connect the two wounds** by placing the foam "bridge" on the transparent film between the wounds. Ensure it has good contact with the foam in the wounds and has no contact with unprotected skin.



**8. Apply transparent film to cover all of the foam:** wound and the "bridge" foam. Follow the film application instructions described under step 5.



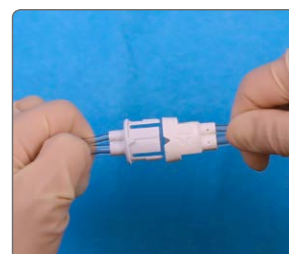
**9. Multiple pieces of film can be used.** The film should extend 3–5 cm beyond the margin of the foam dressing to facilitate an adequate seal.



**10. Select a central area** over one of the wounds to place the FitPad (non-weight bearing area). Pinch the film lifting slightly and cut a small hole (approx. 1 cm).



**11. Peel off the backing** of the FitPad to expose the adhesive. **Place the FitPad** centered over the previously cut hole. Press firmly for adherence.



**12. Attach the dressing tubing** to the pump tubing by pushing the **Quick-connector** together until you hear a click.

Medical Vacuum Technology for Healthcare Professionals

Please contact us or your local Medela representative for details.

 Medela AG  
Lättichstrasse 4b  
6341 Baar, Switzerland  
www.medela.com

**USA**  
Medela LLC  
1101 Corporate Drive  
McHenry, IL 60050, USA  
Phone +1 877 735 1626  
Fax +1 815 307 8942  
info-healthcare@medela.com  
www.medela-healthcare.us

**Canada**  
Medela Canada Inc.  
4160 Sladeview Cres., Unit #8  
Mississauga, ON  
L5L 0A1, Canada  
Phone +1 800 435 8316  
Fax +1 800 995 7867  
info@medela.ca  
www.medela.ca

Local contact:

**CAUTION: U.S. Federal law restricts this device to sale by or on the order of a physician.**